

# Frontenac

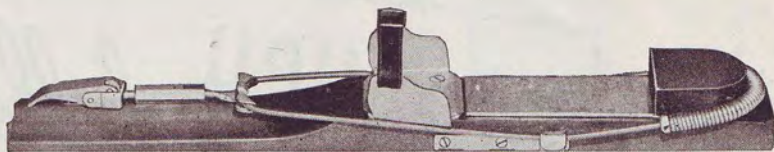
*Blue Label*  
**LAGER**



AT THE END OF THE TRAIL . . . APRÈS UNE RANDONNÉE

# Chalet

*"Super"*



## CABLE TYPE DOWNHILL BINDING

Each season the name CHALET blazes a trail across the ski firmament with the last word in ski equipment . . . "at the right prices."

This year is no exception. CHALET smashes it's way to the front again, with a new cable type downhill binding of rugged, dependable quality, expertly designed, and "priced right" to suit every skier's pocket.

The reason why CHALET equipment is always in the vanguard is ever the same . . . simply a never ceasing endeavour to bring the best of up-to-the-minute ski equipment within the reach of all skiers . . . "at the right price."

Be sure to see this amazing new cable binding and the entirely new line-up of skis, and covered poles (no more split poles).

We also manufacture many other accessories.

*"You can Ski confidently with Chalet"*

TORONTO . . . **Harvey E. Dodds**  
*Limited* . . . MONTREAL  
*"The Ski People"*



• SCHUSS

- No spills . . . no disappointments if your winter-sports clothes have been chosen on expert advice at the Jaeger Sports Shop!

# JAEGER

JAEGER HOUSE • LONDON • MONTREAL • TORONTO



for **HIGH** hills  
or **LOW**  
by **TRAIN** we shall go!

**CANADIAN  
NATIONAL  
RAILWAYS**




Come by  
**CANADIAN NATIONAL  
TO CANADA'S BEST SKI GROUNDS.**

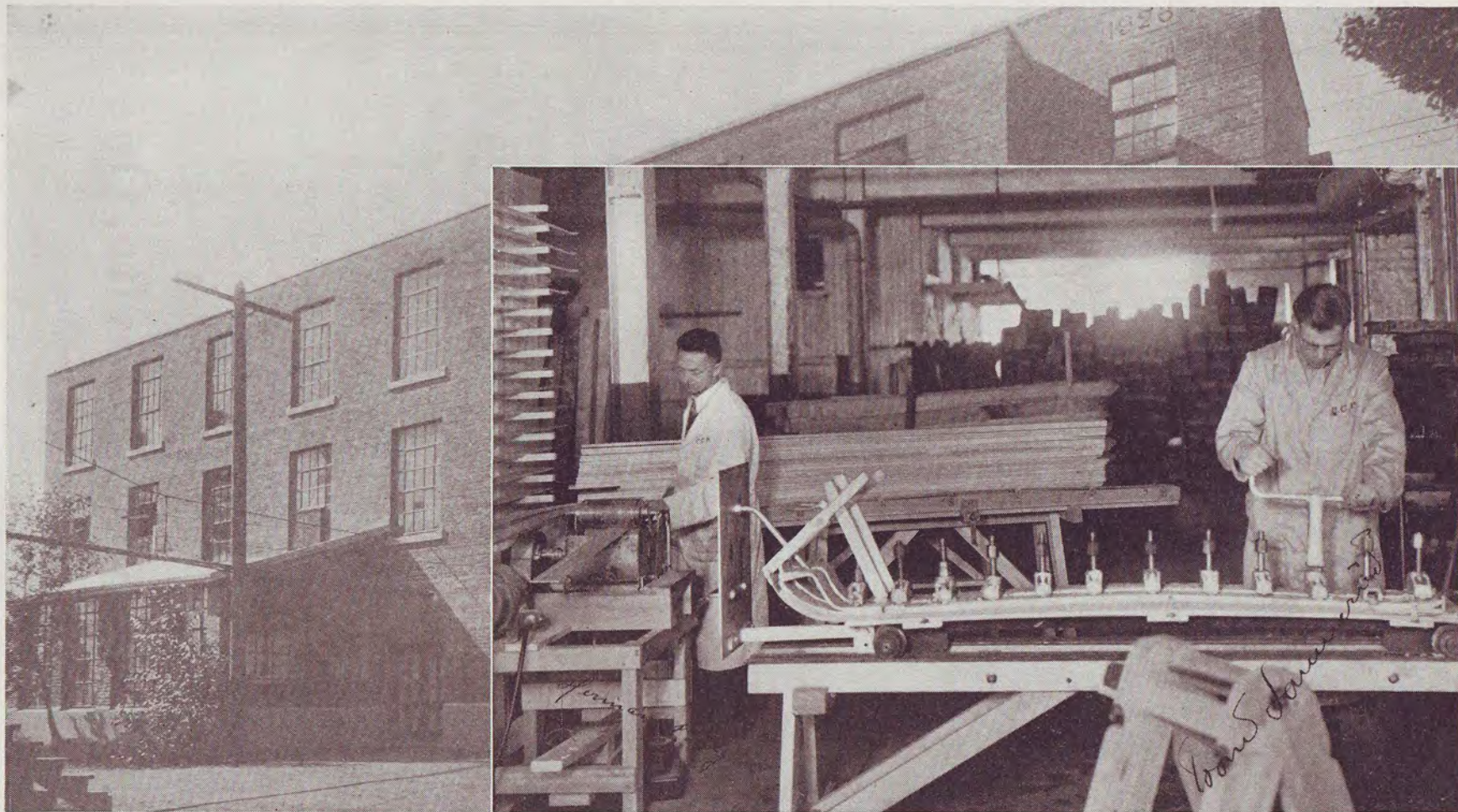
**C**ANADIAN NATIONAL will take you quickly, and comfortably to the kind of ski-country you want. And whether you travel alone or in a party you'll *enjoy the trip*...for when you travel by train you are free to stroll from car to car, chatting with friends (whom you are *bound* to meet), or perhaps making a "fourth" in a game of bridge, as you speed toward your destination.

Your Canadian National Agent will gladly help you arrange week-end ski-trips or longer ski-holidays.

Ask about low rail fares and ski-trips to Jasper National Park in the Canadian Rockies.



**CANADIAN NATIONAL**



### **SPLITKEIN SKIS — NOW BY C.C.M.-CHOQUETTE**

Herman Berger, (left of picture) and Trond Lommerud, (right of picture) Works Manager and Chief Mechanic, have been sent here by "Splitkein" Factory to train C.C.M.-Choquette men in the art of producing the world-wide known "Splitkein" Skis. Their experience in the "Splitkein" Factory and also the fact of their having set up a number of plants in various countries truly designates them as "Master Craftsmen".

Ski craftsmen from Splitkein Factory, Oslo, Norway, at work in the plant of C.C.M.-Choquette Wood Specialties Company, Limited, St. John, Quebec.

Picture in background is the new C.C.M.-Choquette plant where both laminated and one-piece Skies are being produced.

See article on Splitkein Skis on page 126.

**For particulars see your local C.C.M. dealer**

**LEARN to SKI**—*as Thousands have  
Learned at Ober-Gurgl, Champs de Feu, Lobbia Alta*



**HERMANN GADNER**

**DIRECTOR, SNOW EAGLE SKI SCHOOL**

*Austria's representative several times in FIS  
Championships*

*Eight years instructor at Ober-Gurgl Ski  
School, in the Austrian Tyrol*

*Teacher at Champs du Feu (Vosges) France*

*Teacher at Lobbia Alta, Italy*

*One time winner of Cross-Country Cham-  
pionship of Switzerland at Le Brassus*

*Austrian Cross-Country Champion at Villach  
in 1938*

•  
All Snow Eagle Ski School pupils receive  
the personal attention of Mr. Gadner as  
well as the assistance of his instructors

## The SNOW EAGLE SKI SCHOOL

at Gray Rocks Inn  
St. Jovite, Que.

provides you with the opportunity  
to receive personal instruction under  
Hermann Gadner—outstanding figure  
in European Ski-ing. Six lessons  
and you'll be amazed at the results  
—or one or two private lessons to  
correct those long-standing faults.

Here is a real opportunity for all  
types of skiers—125 miles of trails,  
ski lift, several instructors, gentle  
practice slopes—and above all the  
atmosphere and warm hospitality of  
one of the Laurentian's oldest hos-  
telries—Gray Rocks Inn.

•  
Make your reservations NOW! this  
will be a big winter at Gray Rocks.

•  
*Write for Special Snow Eagle Ski School Folder*

# Gray Rocks Inn, St. Jovite, Que.

F. H. WHEELER, Managing Director

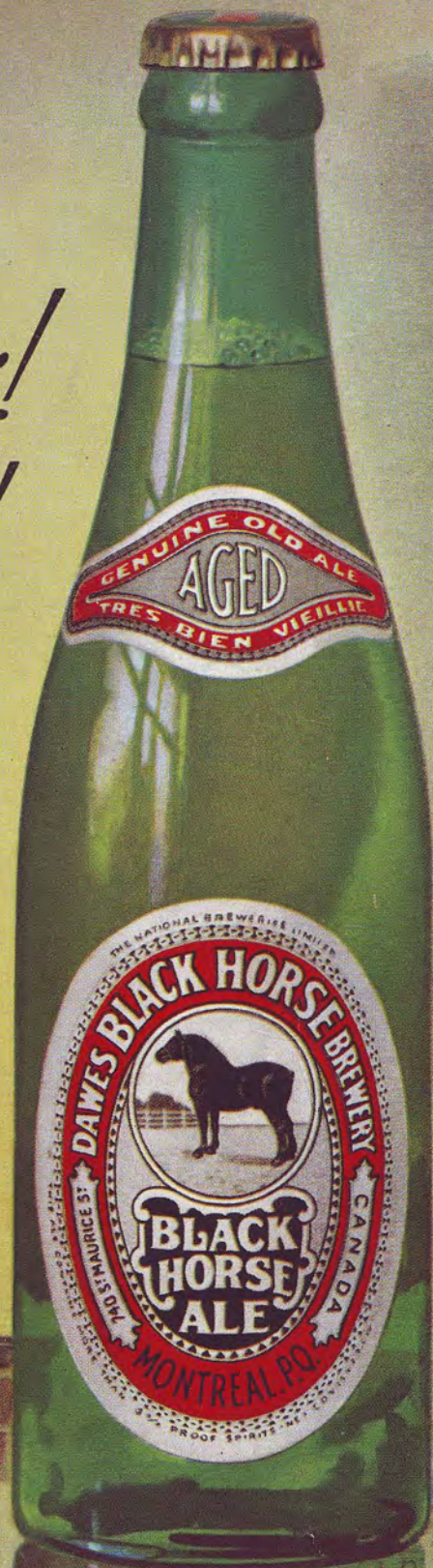
*It's Smoother!  
It's Mellowier!  
It's Better-  
Than Ever!*

## **BLACK HORSE**

Canada's Finest ALE



Made for five generations by the  
Dawes Brewery, Montreal





## *"The Ale of Good Taste"*

**T**HE best things in life . . . the things that make for hospitality and good fellowship . . . go hand in hand with quality and good taste. It is for such reasons that Dow Old Stock Ale has retained its popularity for almost a century and a half . . . Brewed to the modern

taste, Dow Old Stock Ale has a wholesome flavour that grows more friendly with renewed acquaintance. If you have not already tried this fine old ale, a pleasant surprise awaits you. Dow Old Stock Ale comes to you at the peak of maturity. It is always pure—always refreshing!

**DOW OLD STOCK ALE**